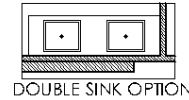
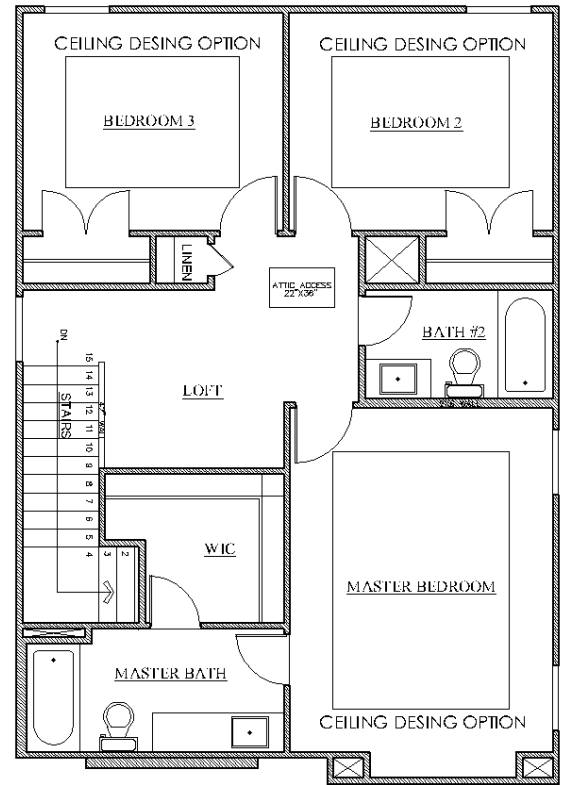
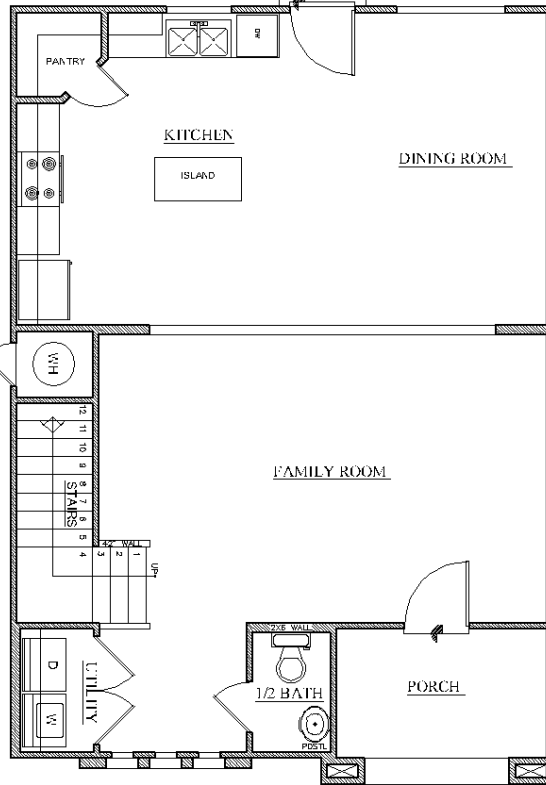


FLOOR PLANS

SANTA ELIZABETH

3 bedrooms
 2 1/2 baths
 1,730 total sq. ft.



This plan is copyrighted by WestWind Homes and may not be reproduced, modified or reused without the express written consent of WestWind Homes. For information call: (956) 968-4238.

Working drawings shall not be scaled; details and drawings are builder type. WestWind Homes reserves the right to change floorplans, specifications, prices, financing terms and availability without prior notice and may vary by neighborhood, lot locations and home series.

BUILT BY



This price of \$_____ is valid for 30 days. _____
 (signed by WestWind Sales Representative) Date

www.westwindhomes.com

Phone# _____

Office Hours: Monday – Friday 10am – 7 pm Saturday 12noon – 6 pm **Closed Sundays**

FLOOR PLANS

SANTA ELIZABETH



CONTEMPORARY



TRADITIONAL

MEDITERRANEAN



TUSCAN

FARMHOUSE

